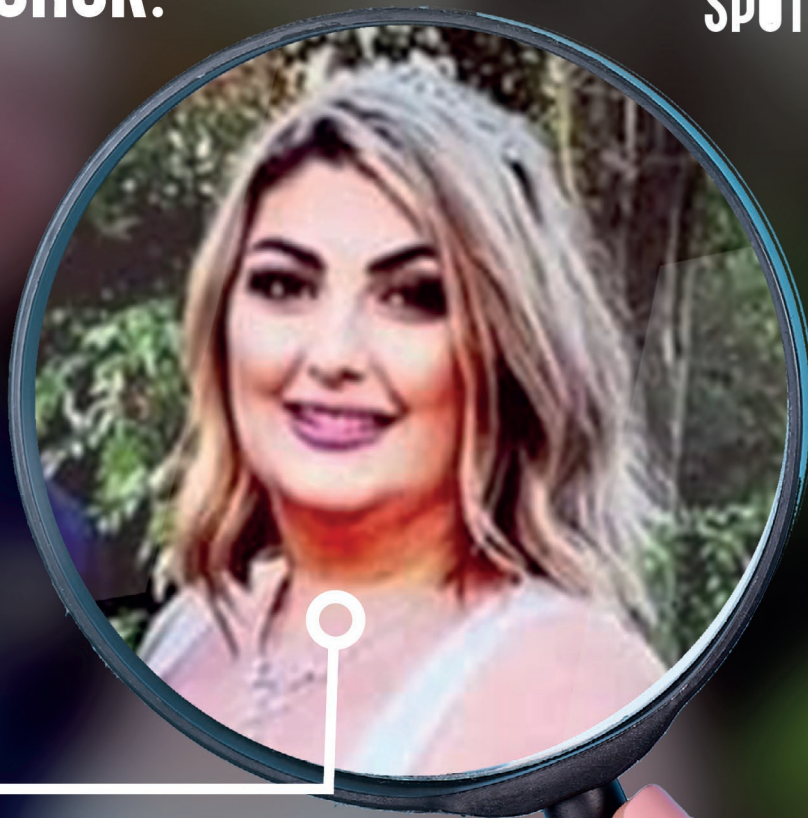


**JOANNA, 33,
NON-SMOKER:**

ROY CASTLE
LUNG CANCER
FOUNDATION
SPOT THE DIFFERENCE



SYMPTOMS: BREATHLESSNESS
SHOULDER PAIN
INTERMITTENT COUGH
RECURRING CHEST INFECTIONS
WEIGHT LOSS (WHILST PREGNANT)

**DURATION OF
SYMPTOMS:** 16 MONTHS

DIAGNOSIS: STAGE 4 ALK+ LUNG CANCER

We know the majority of cases like Joanna's won't be lung cancer but if you see a patient who is displaying any of these symptoms, it is important to consider lung cancer and refer for x-ray where appropriate.

Our online toolkit can help you spot potential lung cancer symptoms.

ROYCASTLE.ORG/TOOLKIT



**WATCH JOANNA'S
FULL STORY HERE**